

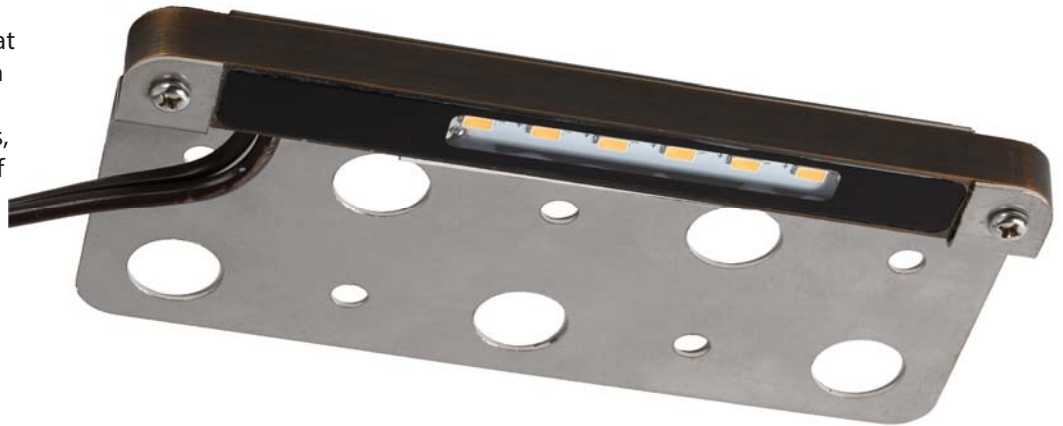
Solid Brass Integrated LED Coping Fixtures

Cliff, Illumicare’s integrated LED coping light, is constructed of solid cast brass and provides a wide, soft, glare-free ambient lighting for hardscape elements in your outdoor living spaces.

When designing the perfect outdoor oasis, Cliff offers wide, even lighting that creates ambiance, yet provides enough illumination for safe passage through the landscape. By clearly marking stairs, railings, edges, and retaining walls, Cliff is perfect for illuminating hardscapes and structures with casual, safety lighting.

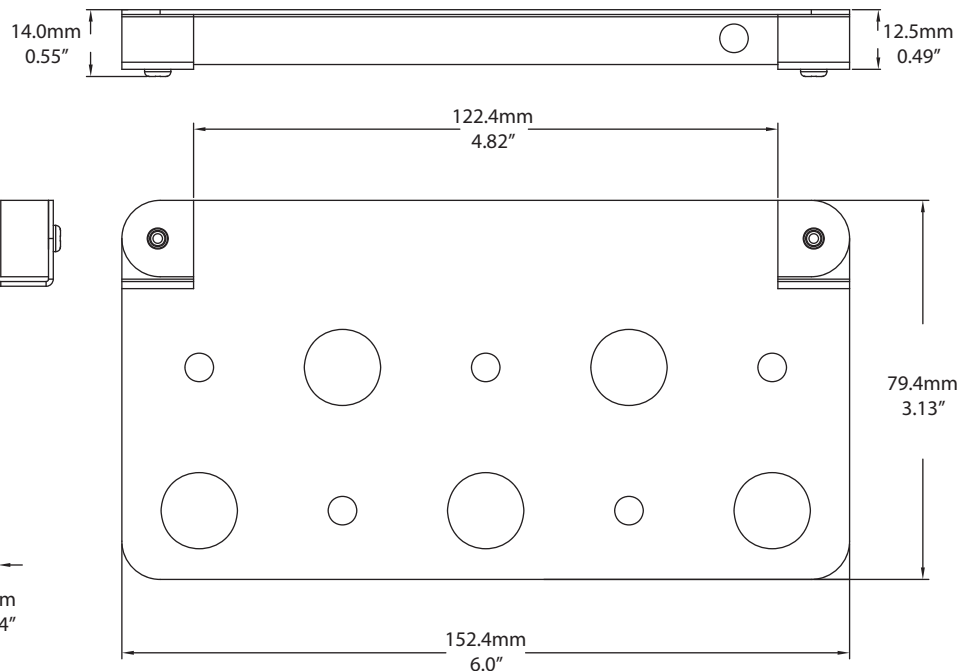
The integrated Samsung LED chips are powered by the same proprietary driver as our flagship MR16 lamps.

Cliff’s flat tempered glass offers just enough light to create a private, comfortable atmosphere for an outdoor patio, built in spa, or outdoor kitchen, turning your landscape into the perfect place to relax or entertain.



Luminaire Mounting

Cliff is mounted horizontally between surfaces using the flat stainless steel mounting bracket. This bracket can be inserted in existing structures or added to newly poured hardscape compounds. The luminaire can be unfastened from the mounting bracket by the two set-screws for easy maintenance or replacement.



Specifications

Construction:	Solid Cast Brass
Dimensions:	6.00" x 3.13" x 0.55"
Finish:	Weathered Red Brass
Output:	206 Lumens
Wattage:	2 Watts
Mount:	Flat Stainless Steel Bracket
Weight:	0.25 lbs
Wire:	36" 18/2 UL Rated Lead Wire
Lens:	1/8" Flat Tempered Glass
Voltage:	12V