



Outdoor WiFi Smart Socket

Works with Amazon Echo and Google Home



Specifications

Rating: AC 110V-240V/10A (per switch) /1200W

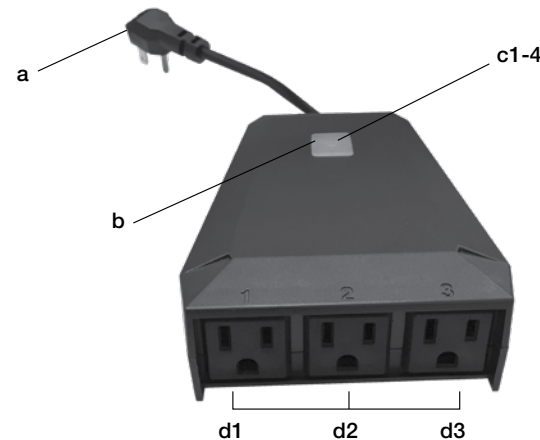
Waterproof Standard: IP44

WiFi Standard: 2.4GHz b/g/n

Cable Length: 4.5 in / 11.4 cm

Working Temperature: -10-45°C

Product profile & indicator light introduction



- a) Power plug, AC100-240V 50-60Hz 10A
- b) ON/OFF button - Turn on/off if pressing 1 second. Open WiFi hot spot if pressing 5 seconds.
- c1) **Red LED** - WiFi hot spot is opened if red light flashing quickly. Red light is always lit when device is already connected to WiFi.
- c2-4) **Green (d1)**, **Yellow (d2)** or **Blue (d3) LED** - Light is on - indicates that corresponding outlet (d1-3) is on; no light indicates that the outlet is off.
- d1-3) Power outlets 1-3, AC100-240V 50-60Hz 10A

Use App | 1. Download App ILLUMISMART

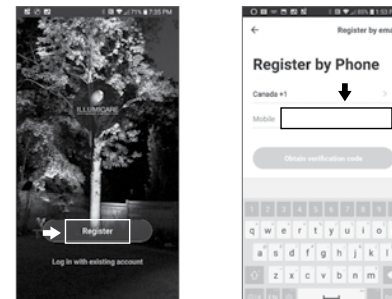
Scan the QR code to automatically download the appropriate IllumiSmart App for your device. You can also search "Illumismart" in either the App Store® or Google Play to install the app.



2. Register

If you don't have an App account, register an account or sign in with verification code by SMS.

- Tap to enter registration page. The system automatically recognizes your country/area. You can also select your country code. Enter the mobile number/email and tap "Next".
- If you enter the mobile number, you must also enter the verification code in the message, followed by password. Next tap "Confirm" to finish your registration.

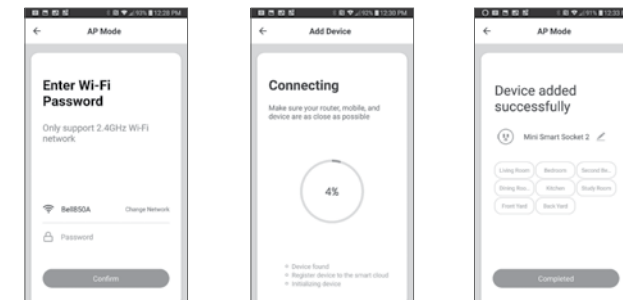


3. Add Device

- Enter the App; tap "+" or "Add Device" and select the corresponding device type to enter network connection page.
- Press and hold the reset button for 6 seconds. The indicator will blink rapidly. Click "Confirm indicator rapidly blink". Configure network based on prompt of the App.

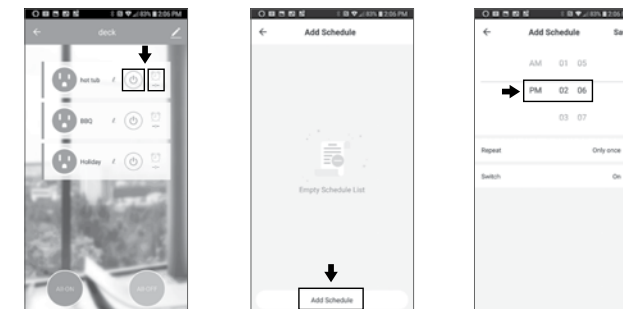


- Change to WiFi 2.4 GH 802.11 b/g/n, enter password and tap "OK" to connect to network.



4. Control Device

After successfully configuring the devices, the smart device will be shown on the home page. Tap to enter its control page, click on the button for ON / OFF operations and tap on the timer for regular operations.



Guide to Using Amazon Echo to Control Smart Socket

Before using Echo to control your smart devices, ensure you meet the following conditions:

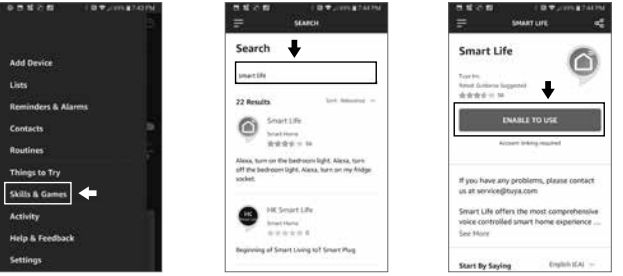
- Stable WiFi network and an Amazon account
- Amazon Echo device including Echo, Echo Tap, Echo Dot
- Smart Life App & related account + Smart Socket

1. Add devices in IllumiSmart App

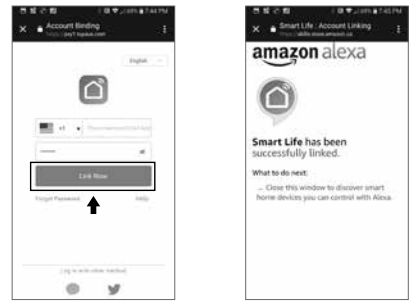
- Ensure that the device names in the App are easily recognized words or phrases, like "BBQ".

2. Link Smart Life Account to Alexa

- Tap "Skills" in the home menu, then search "Smart Life". Select "Smart Life" and tap "ENABLE" to enable the Skill.

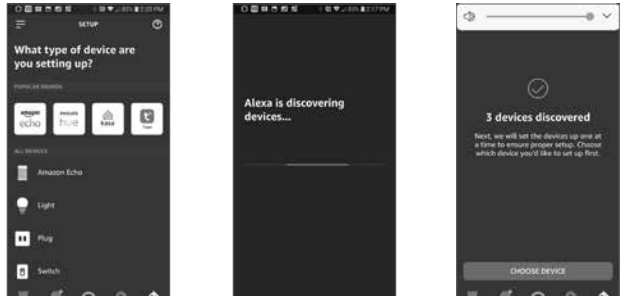


- You will be redirected to the account link page. Type in your Smart Life username and password, and select the country/region your account is associated with. Tap "LINK NOW" to link your Smart Life account. NOTE: the country/region + user name + password must match with the registration information. Tap the "X" in the upper left corner of the screen to go back to the Alexa App.



3. Control your Smart Devices through Echo

- Discover devices - Echo needs to discover your smart devices before it controls them. You can say "Alexa, discover devices" to Echo, and it will discover devices that have already been added in the IllumiSmart App. You can also tap "DISCOVER" to discover the smart devices. Discovered devices will be shown in the list.



Note: Every time the device's name is changed on the IllumiSmart App, Echo must re-discover the device before controlling it.

- Control devices by voice command - You can now control your smart devices through Echo. I.e. - BBQ - "Alexa, turn ON/OFF BBQ".

Guide to Using Google Home to Control Smart Socket

Before using Home to control your smart devices, ensure you meet the following conditions:

- Stable WiFi network and a Google account
- Google Home device including Home, Home Mini and Home Max
- Smart Life App & related account + Smart Socket

1. Add devices in IllumiSmart App

- Ensure that the device names in the App are easily recognized words or phrases, like "BBQ".

2. Link Smart Life Account to Google Assistant

- Tap "Set up device" in the Add to home menu, then Link your smart home device by selecting "Smart Life" from the list of available Linked Services.



- You will be redirected to the account link page. Type in your IllumiSmart username and password, and select the country/region your account is associated with. Tap "LINK NOW" to link your IllumiSmart account.

NOTE: the country/region + username + password must match with the registration information.



3. Control your Smart Devices through Google Home

- Sync devices - Google Home needs to sync your smart devices before it controls them. You can say "Hey Google, sync my devices", and it will discover devices that have already been added in the IllumiSmart App and sync them.

- Control devices by voice command. You can now control your smart devices through Google Home. I.e. - BBQ "Turn on BBQ".

